



Chumboon

赛邦包装



01

公司概况
Company Overview

02

产品及服务
Product and Service

03

市场
Market

04

设备技术
Equipment

05

质量与证书
Quality Control and Certificate

目 录
CONTENT

A large, red, abstract shape resembling a rounded triangle or a teardrop, containing the title '目 录' (Table of Contents) in white Chinese characters and 'CONTENT' in white, uppercase, sans-serif English letters.

Our Company

A Full-sized Metal Closures Provider

A member of the China Packaging Federation

Top 500 Manufacturers In Guangdong Province

Metal Packaging Joint Research And Development Center





Our Company



Chumboon Metal Packaging Corporation
(Guangzhou Chumboon Import&Export Trading Co.,Ltd)



Foshan Nanhai Chumboon Iron-printing & Tin-Making Co.,Ltd



Tianjin Chumboon Packaging Co.,ltd



Zhejiang Chumboon Iron-printing & Tin-Making Co.,Ltd



Guangzhou Chumxin Metal Product Co.,Ltd

Our Company



Aerosol tin can



Tin Box



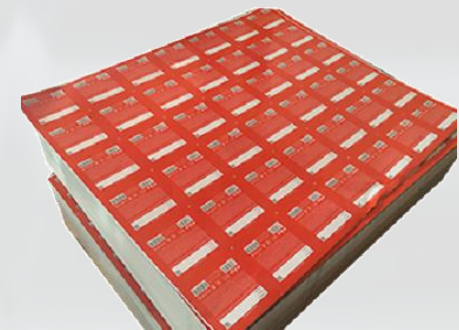
Two Piece Aerosol Can



Cone And Dome



Brake/Engine Oil Can



Printed Tinplate



Our Company



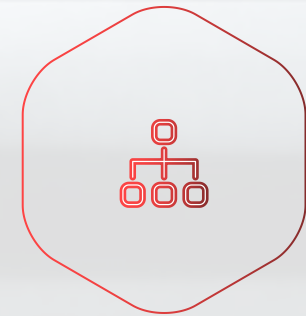
2020
Turnover:
80 million USD
Sales growth 15%



History > 30 years



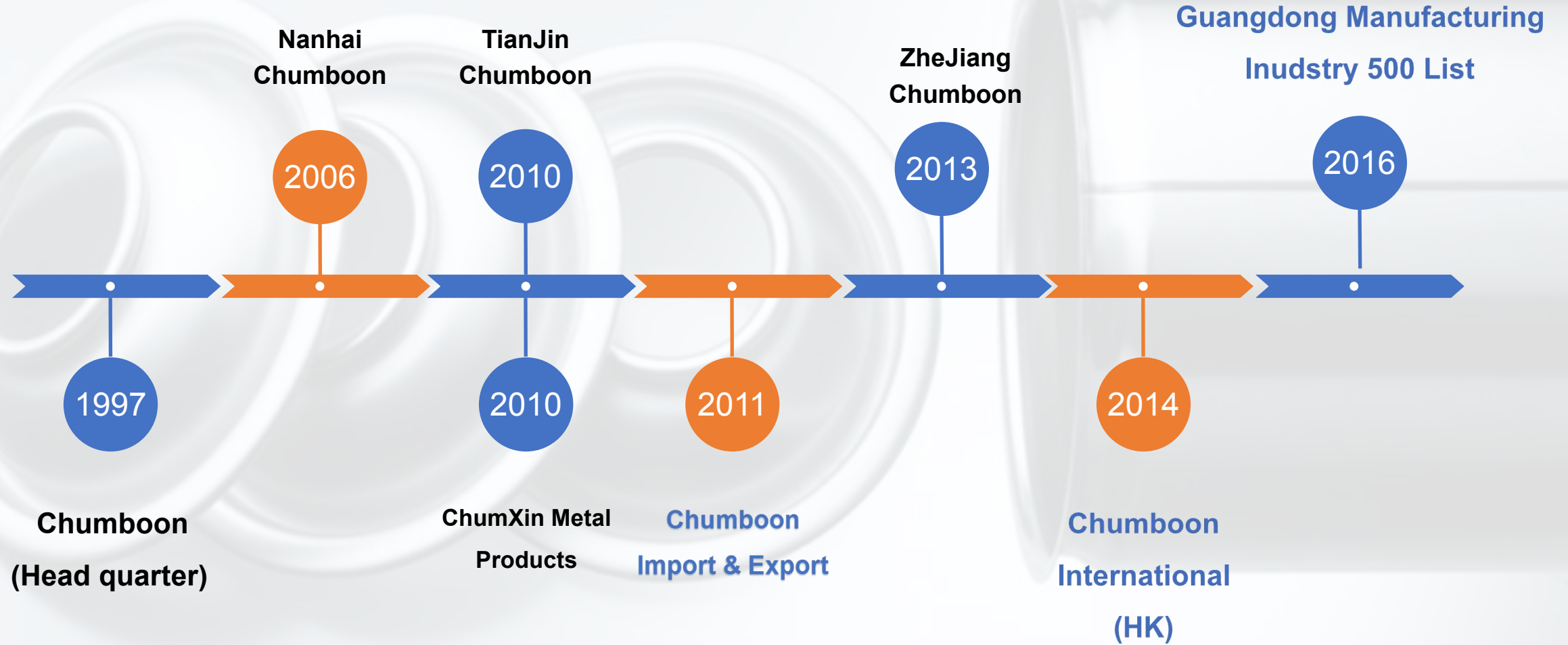
Employee > 700



Export > 55%



Our Company



Our Market



32% *North America*
(USA, Mexico)

28% *South America*
(Briza, Argentina, Colombia,
Uruguay, Ecuador)

17% *Asian*
(India , Malaysia,
Vietnam, Pakistan)

15% *Middle East*

8% *Africa*



Our Market

Main Partners





Our Product

Aerosol tin can

Diameter	45mm	52mm	57mm	60mm	65mm	70mm	
Type	Neck-in			Neck-in	Straight	Neck-in	
Height	95-300mm					95-253mm	
Picture							
Uses	Body Spray	Air Freshener	Home Care /Animal Care	Paint	Car Care/Paint	Gas	PU Form



Our Product

Tin Box

Tea



Gift



Candy



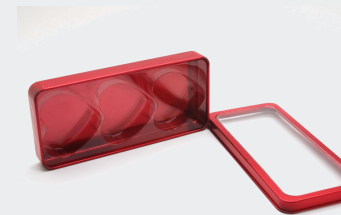
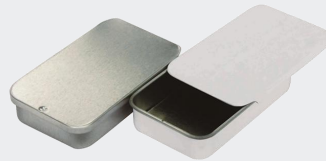
Cookie



Chocolate









Lunch





Our Product

Brake /Engine Oil can

Diameter	52mm	60mm	65mm	85/89mm	99mm	1L/2L
Height	95-220mm					
Picture						

Our Equipment

Our printing Lines are equipped from Germany and Japan with printing speed at 120pcs /min

Germany KBA 6 Color: **1** Lines

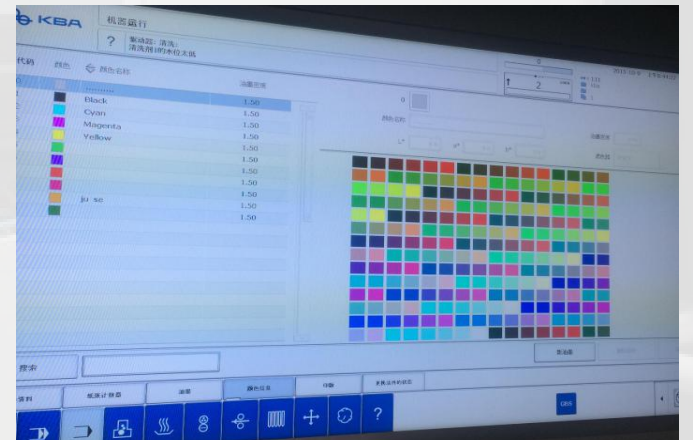
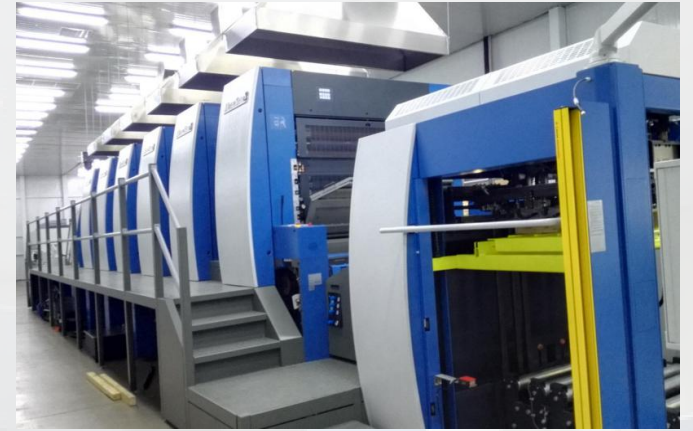
Germany KBA 4 Color: **1** Lines

Japan Fuji 4 Color: **1** Lines

Germany KBA 2 Color: **2** Lines

Japan Fuji 2 Color: **2** Line

Japan Fuji Coating Machine: **8** Lines





Our Equipment

Our Aerosol Can Making Lines are equipped from Switzerland with production speed at 300-500pcs /min

- Soudronic Can Making +Lanic Former +Bonfiloli Leak Test+Auto Packing : **6** Lines
- Soudronic Can Making +Lanic Former +Bonfiloli Leak Test+Robotic Hand Packing : **4** Lines
- Taiwin Can Making +Domestic Former +Bonfiloli Leak Test:**2** Lines





Our Equipment



Soudronic Can Making line with production speed
500pcs/min



Our Equipment



High Speed Production Line (Cone And Dome)

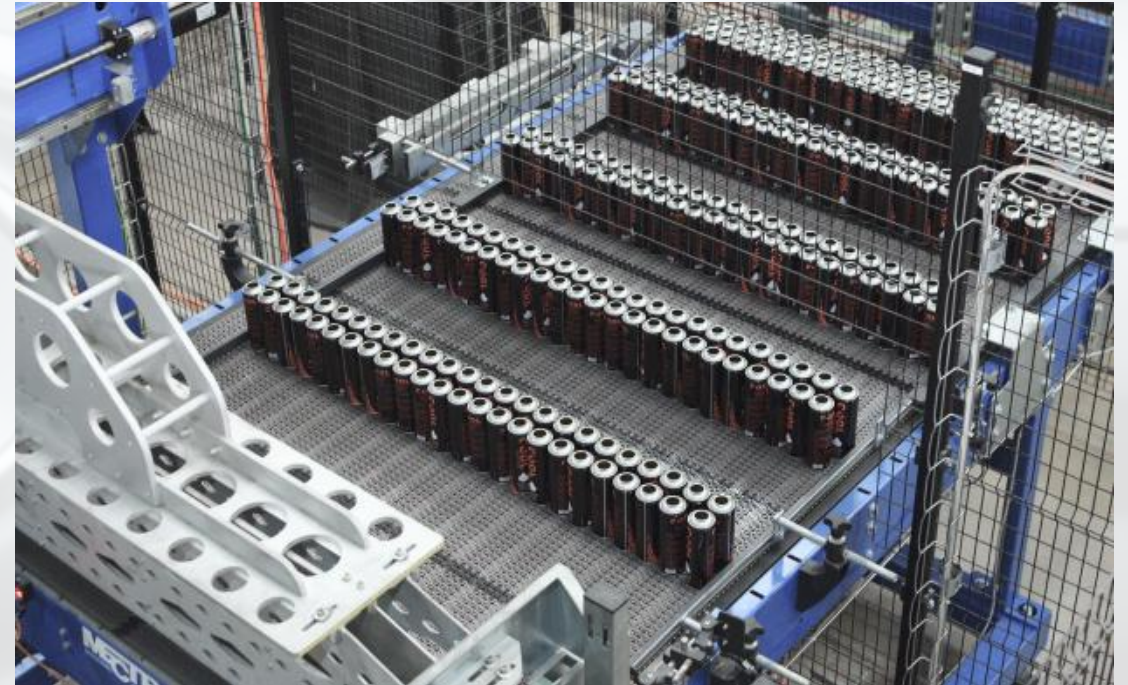


Our Equipment



Automatic Tin Box Production Line

Our Equipment



Automatic Aerosol tin Can Packaging Line



Quality Control (About Printing)

Before Printing

We will analysis the design (PDF/AI format) and propose a suitable printing process plan

Under Printing

Every Tinplate sheet will through KBA monitoring system, they will be reflected on the Real-time feedback system .

After Printing

Engineer will check printing effect and confirm the printing standard





Quality Control (About Can Making)

Before Production

Test at least 1000pcs to ensure everything is stable before production

Under Production

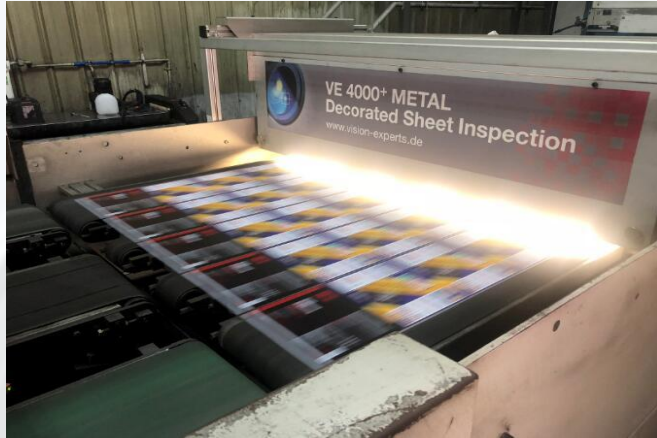
Test the welding quality every 5minuts to ensure all batch produts are qualified and every can will 100% test by leaking machine .

After Production

Engineers do 20 process tests to make sure the cans are delivered to the customer flawlessly.



Quality Control



Printing Color Control



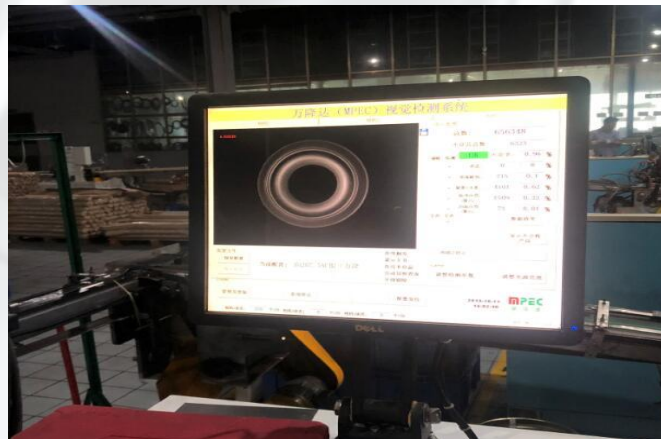
Printing adhesion Test



Aerosol can data inspection



Buckle/Burst Pressure Test



Cone and dome Test



Leaking Test

Certificate



FACILITY AND MERCHANDISE AUTHORIZATION

LIUZHONGHONG GROUP, Fabrics and Textiles S.p. de CV
CONTACT NAME, TITLE, AND ADDRESS
 Alvaro Hernandez / Analista
 Alvaro.hernandez@fabricsandtextiles.com.mx

STREET ADDRESS, Ciudad y Estado de San Pedro
 1116
 Colonia Valle de San Pedro
 Capatzen, A.D. 141
 Mexico

TELEPHONE NUMBER, 52 30303 0100

L Facility Name , Please enter three-letter product code if applicable (e.g. AC-67597) Chambon Metal Packaging Corporation	M. Contact Name, Title and E-mail Shan W. Fu, Sales Manager, market@qiyunbao.com
In Facility Address No. 7 Zhuan Di Zhangcheng Guangzhou, Zhuhai, Guangdong China	No. List of other names by which the Facility is known
In Telephone Number , 86 75 78 56528	

Your signed letter to an authorized agency of the U.S. Department of Transportation, as a facility (not individual as "Individual Signatory"), Manufacturing and Warehouse Authorization is evidence that the above named manufacturing or warehouse facility produces and/or stores products bearing the Federal property of the U.S. that have complete and sufficient identification as required by these regulations. It is not a license, permit, or other form of product certification. It is "U.S. Property Protection", and is subject to the U.S. Department of Transportation's terms and conditions of use. It may only be used to produce U.S. Property Protection for U.S. customers in accordance with the U.S. Department of Transportation's regulations regarding U.S. Property Protection.

This Facility and Warehouse Authorization expires on the 31st day of July 2015 unless action is taken to extend it.

Authorized Signatory
 F. Christensen
 Fabrics and Textiles S.p. de CV
 21 Analyst, Regional Management U.S. LTM

Revision Date: 2015/06/22
 Expiration Date: 2015/07/31

Disney Certificate

Certificate of DOT Compliance

This certifies that:
Chambon Metal Packaging Corporation
 Nangang Industrial Zone, Zhuzhou Street, Zengcheng,
 Guangzhou, China 511370

is approved by U.S. Department of Transportation under provisions of Part 178 of the Hazardous Materials Regulations (49 CFR Parts 171-180) through America A9 Enterprise LTD

DOT Registration No. M 6016
 U.S. Registration Agent : America A9 Enterprise LTD
 6050 W Eastwood #201 Chicago IL 60639 U.S.A.

This certification certifies the above stated facility is approved by U.S. Department of Transportation under provisions of Part 178 of the Hazardous Materials Regulations (49 CFR Parts 171-180) through America A9 Enterprise LTD. The facility can use this M Symbol on DOT 2P and 2Q containers manufactured at Nangang Industrial Zone, Zhuzhou Street, Zengcheng, Guangzhou, China 511370 and the M symbol must be used in accordance to following requirements:

No.	DOT Requirements	DOT Mark	Remark
1	Max. Capacity : 1 L (0.10 cubic inches) Min. Inside diameter : 76.2 mm (3 inches) Min. Thickness : 0.18 mm (0.007 inches) Min. Burst pressure : 1.66 MPA (240 psig)	DOT-2P	045, 042, 067, 060, 065, 070
2	Max. Capacity : 1 L (0.10 cubic inches) Min. Inside diameter : 76.2 mm (3 inches) Min. Thickness : 0.20 mm (0.008 inches) Min. Burst pressure : 1.86 MPA (270 psig)	DOT-2Q	045, 052, 061, 066, 065, 070

SEALED

Chief Operation Officer
 Certificate Number: A0001300708
 Issued Date : JULY 30, 2015
 Expiration Date : JULY 29, 2020

DOT Certificate

CERTIFICATE
Quality Management Systems
Certificate

Certificate Number: 00218Q245968/AM
 CQM hereby certifies that
Chambon Metal Packaging Corporation

located at: South Lake Industrial Park
 Zhuzhou Street, Zhuzhou Industrial Zone, Zengcheng City, Guangzhou P.R. China 511370
 has implemented and maintains a Quality Management System which fulfills the requirements of the following standards:
GB/T 19001-2016/ISO 9001:2015
Quality management systems—Requirements
 This certificate is valid to the following product(s)/service:
 Production of printing, iron and ink case (maximum size 25.4mm)

Release date: 2015-06-18
 Effective date: 2015-07-09
 Validity date: 2021-07-08
 Registration Number: CQM-44-2003-0516-0001

Ji Xie Ding

CHINA QUALITY MARK CERTIFICATION GROUP

ISO Certificate

SMETA
Sedex Members Ethical
Trade Audit Report
 Version 6.0

Sedex Certificate



Thank you

